



Further Discussions over Safe Walking and Cycling Routes



Proposed changes to footpaths and pavements through Llangattock village will come back out for further discussion with residents in the next few weeks.

The highways authority, Powys County Council, is to hold two on-line meetings, so that officers can share feedback received so far.

- There was strong opposition in the middle of the village to the original plans, which would see some wider, shared-use pathways, a narrower roadway for vehicles and the loss of some parking.
- However, there was also a recognition among residents that footpaths need to be improved. This belief was firmest among schoolchildren and young people who said better provision would make it more likely they would walk or cycle to school.
- Space restricted, however, and PCC says getting the right balance between road users, pedestrians and cyclists is proving difficult. Officers must also meet road safety and disability standards in order to access central government funding. Without it, Llangattock will have to take its place in PCC's queue for general maintenance.

Llangattock Community Council has not reached an agreed position on the proposals but has been supporting community engagement and feeding back suggestions and alternative ideas to the County Council, which will make the final decision. LCC will continue to support residents, publishing dates and links to the meetings as they become available.

LCC urges all residents to get involved in this last round of engagements to share experiences of walking, cycling and driving through the village as it is, as well as worries about parking, access and changes to the character of Llangattock. County Councillor, Jackie Charlton, has also been liaising over the road safety aspects and will be at the meetings. The more people who get involved, the better chance of finding another way and achieving the right solution for the whole of Llangattock.

Please no BBQs in the Park



LCC respectfully asks visitors to the recreation ground not to light BBQs. The ground is dry in the summer months, and the Park is next to the historic ancient Beech Woods. Recently, the fire brigade had to be called because someone had deposited two used and still smouldering BBQs in the plastic waste bin next to the wooden shelters.

For more about the topics here, please visit our website at

www.llangattock-cc.gov.wales

New People join the LCC Team

The Council is pleased to welcome Dave Hutton (right), who has taken over cleaning and caring for the public toilets in the Recreation Ground. Dave has been doing this for Llangynidr for 10 years, the toilets over there are the same design. Please make him welcome. Dave takes over from Geraint King and his team, who leave with LCC's grateful thanks.



LCC has also appointed and welcomed a new Facilities and Community Support Officer. Mark Williams lives in Llangattock, is a carpenter by training and has extensive experience of managing Council assets and facilities in Wales and England. He'll work part time to maintain LCC's assets along with contractors and volunteers.

We would love to hear from more people who would be willing to join a keyholders rota to open and close the toilets. If you live nearby and could help as part of a volunteer team, please contact the Clerk, Kay on Llangattockcc@gmail.com

Store Helps Get Kids Running!



It's been great to see 40-50 kids running round the park on Tuesday evenings, and when Crickhowell Running Club asked for our help to store equipment provided by Welsh Athletics' Athletix Scheme, we were delighted to give the keys to our storeroom for their equipment. This sort of community use was one of the reasons we got money from the Lottery to refurbish the loos.

This year's Summer Fete is at the village park on Saturday 6th June, from noon to 7pm. There'll be music, burgers, ice cream and cake on offer, as well as soft drinks, Pimms and Treebeards bar. The Repair Cafe and stalls from local groups will be there, also children's games and the new boules court.

The weather is uncertain - as usual - we'll only call off the fete if we have heavy rain all day, final decision will be made by 10am on the morning.

Please remember that dogs are not allowed in the park; also there is very limited street parking, so please leave your cars at home if you are able.

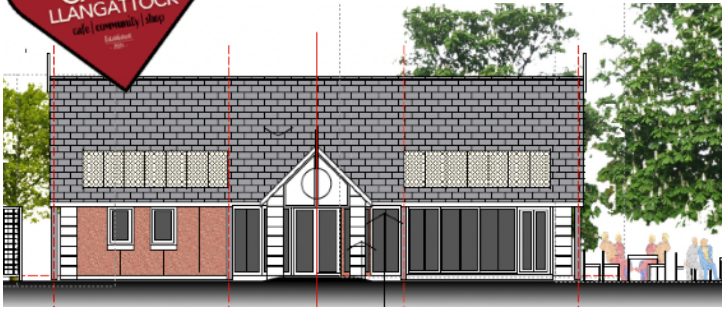
Llangattock Party in the Park



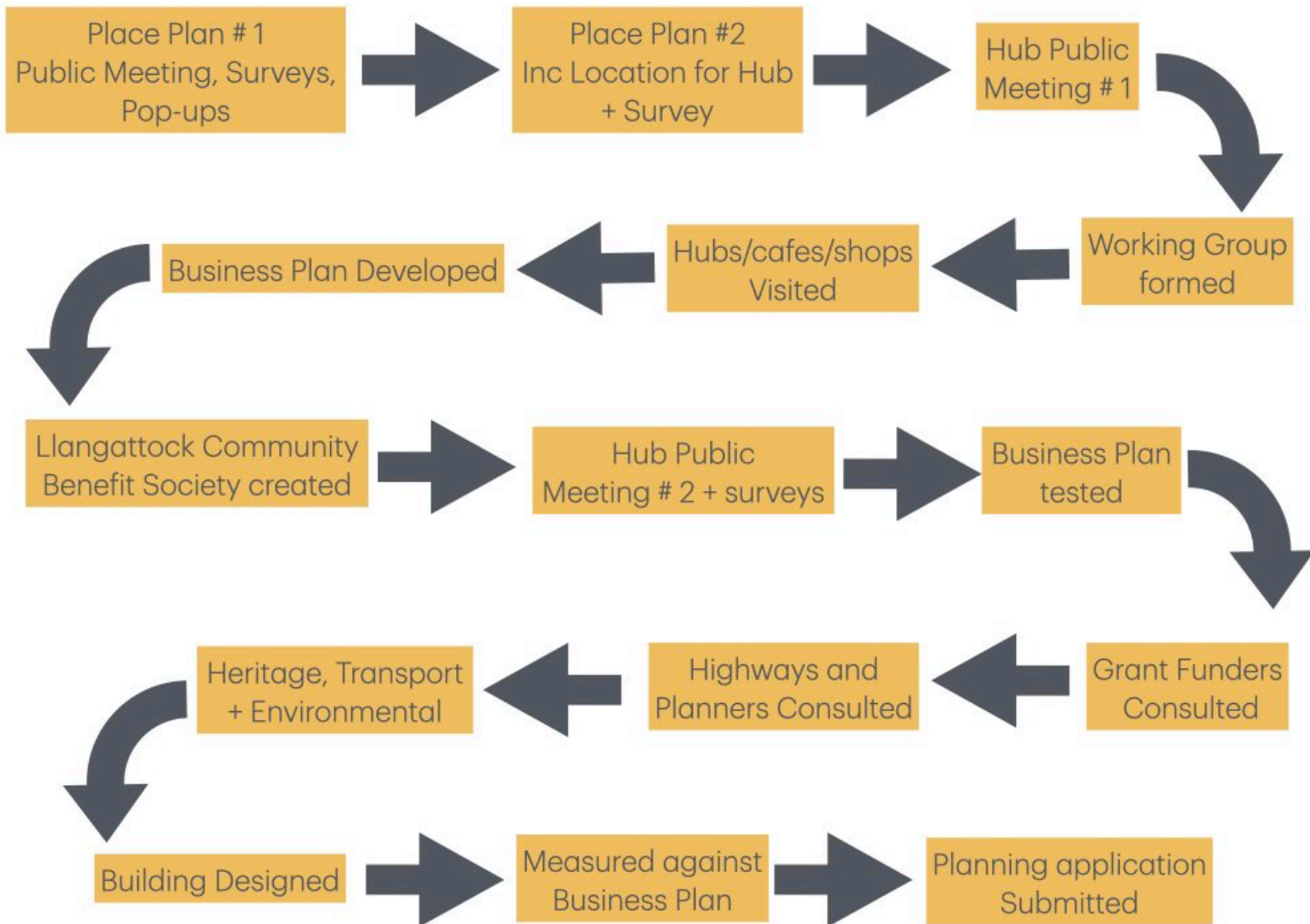
For more about the topics here, please visit our website at

www.llangattock-cc.gov.wales

Hub Planning Application Submitted



Three years after the idea of having a community hub/shop/café and daytime meeting place first emerged during the Llangattock Place Plan Consultations, a planning application has been submitted. This is the process which has been followed:



Having studied other community enterprises, drafted a business plan and considered different models, the Working Group believes the most viable option would run with some paid staff supported by community volunteers. A building of this scale would be both financially viable and acceptable to the community, all other options having been ruled out.

The hub would be built at the Northeastern edge of the Recreation Ground, just off the circular path, with supporting parking at the edge of the allotment field. If LCC achieves planning permission, it would issue a lease to Llangattock Community Benefit Society, which has been formed to run the hub. To go ahead, though, it would require volunteer and community support.

LCC will publish links to the application as soon as it is validated and is proposing to hold at least one pop-up session to explain the plans. Residents will be able to comment as part of the planning process.

Fallen Trees

Several trees have fallen across footpaths in Llangattock recently and it's raised questions about who is responsible for clearing them. LCC asked the Bannau Brycheiniog Rights of Way Team and this is what they said.

In the event that a tree falls across a public right of way:

- Landowners have responsibility for trees on their land and should inspect and maintain them to reduce the risk from falling branches or trees
- If a tree falls from one property to another, it is the responsibility of the landowner from where the tree fell to clear it (in consultation with the other landowner)
- If a tree falls across a footpath, bridleway or restricted byway, it is the responsibility of the landowner from where the tree fell to clear the right of way. Local authorities can enforce this.
- In the event of a dispute between landowners and ownership of the tree is denied, the landowner with the right of way becomes responsible by default
- No third party should attempt to clear the right of way without first contacting the landowner over whose land the right of way runs and the local authority (in case the right of way needs to be closed whilst any clearance work is in progress).
- The Rights of Way team can be contacted on row@beacons-npa.gov.uk

You can join the Council

We have two vacancies on the Council and are always interested to hear from residents who want to get involved in our community. LCC's budget is small but we are able to raise substantial grants and run projects which make a real difference. It can be a rewarding, learning experience and an opportunity to share skills and give back to Llangattock. If you want to know more please email Clerk, Kay on Llangattockcc@gmail.com for a chat about becoming a Councillor.